



1779 Well Branch Pkwy #110B
Austin, TX 78728
512.251.1302
www.recorders.com

Setting up a Olympus digital recorder with Dragon NaturallySpeaking Version 9

This instructional guide walks you through the process of creating an Olympus digital voice recorder profile within Dragon NaturallySpeaking v9. Illustrated screen shots have been included for your convenience.

Preparing the recorder

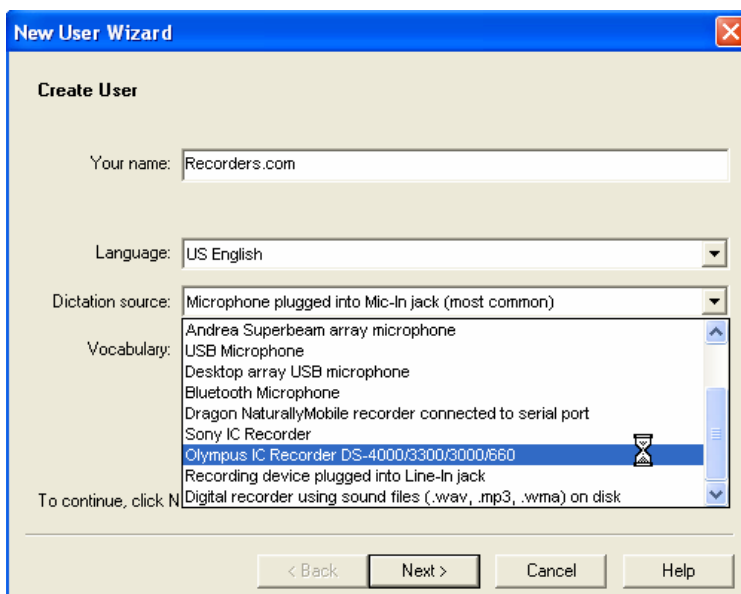
1. Set the recording mode to SP.
2. Set the microphone sensitivity level to dictation.
3. Prior to creating your speech profile in Dragon NaturallySpeaking v9, make sure you have already installed the Olympus DSS Player Pro software. A product key is required for this software installation, be sure to keep that product key in a safe place.

Note: Make sure you are on the latest software release, Version DSS Player Pro 4.8.5, to work with Dragon NaturallySpeaking 9. The Pro 4.8.5 is a free download. The patch will ensure full compatibility with Dragon NaturallySpeaking v9. Please see the following link for more information:

<http://www.recorders.com/articles/articles/33/1/DSS-Player-Pro-Release-4-Update-Version-4.8.5>

Creating your Olympus profile in Dragon NaturallySpeaking v9

1. Open Dragon NaturallySpeaking. On the DragonBar, select NaturallySpeaking, then Open User. The Open User dialog box will open. Select **New...**. The following New User Wizard box will appear. Enter your name and select your preferred language. In the Dictation Source, select Olympus IC Recorder DS-4000



Note: Please note that if you have a standard speech profile already set up, check the Dragon NaturallySpeaking user manual on 'Adding a Dictation Source'. You may prefer to add an additional dictation source rather than creating a brand new one.

2. After clicking Next; you will be re-directed to the New User Wizard. This is a 3 step process:
- 1) Record your speech
 - 2) Transfer your recorded speech to your computer
 - 3) Let Dragon NaturallySpeaking adapt your user.

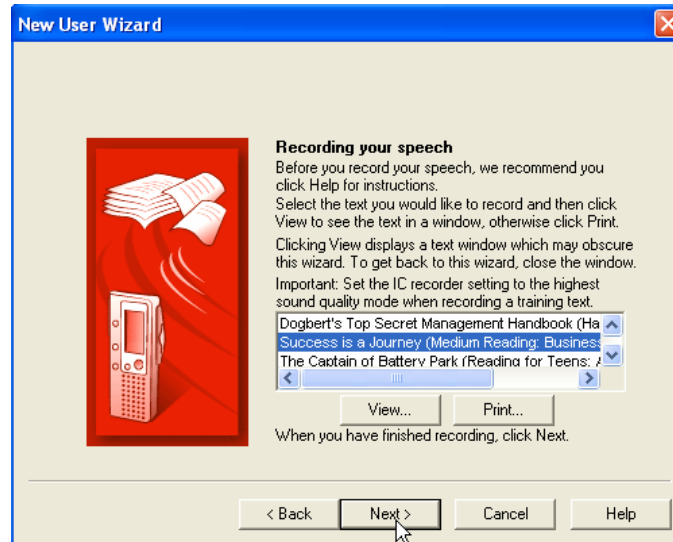
Note: Please be sure to follow the listed above in the 'Preparing the Recorder' section before proceeding



Note: Please make sure that while completing step 1, that your dictation is at least 16 minutes. During this process, do not dictate punctuation, just read the story as normal.


Recording your speech

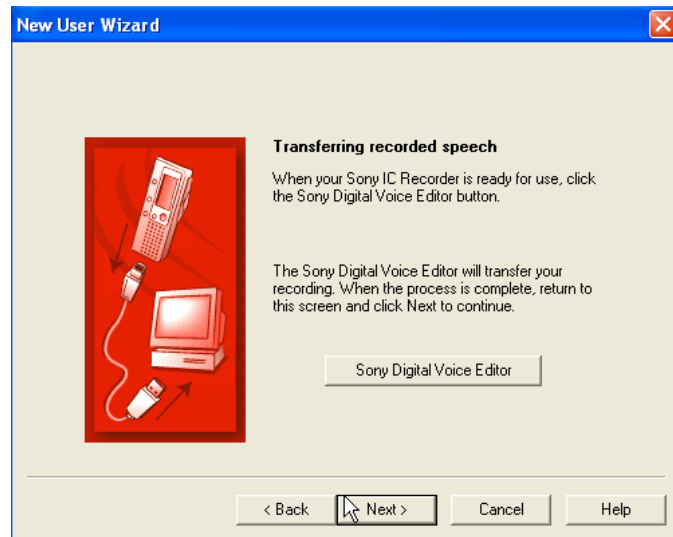
1. After clicking , you will be prompted to select a reading. You will have the options of reading directly from your PC or printing the story of your choice.



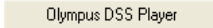
As you can see, there are a number of story options. Choose any one you wish. My favorites are: Dogbert's Top Secret Management Handbook & Success is a Journey.

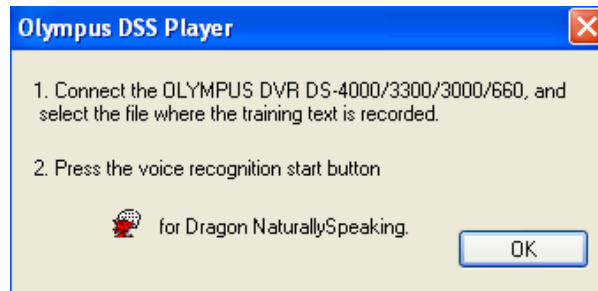
Transfer your recorded speech to your computer


1. After reading into the recorder, it's time to transfer your dictation, click . The following dialog box will appear:

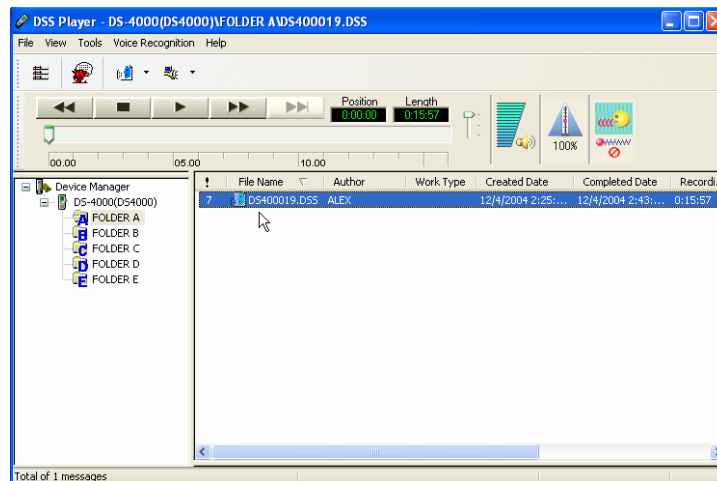



2. Essentially, you have two methods of transferring your recorded data to the computer. The first is by connecting the USB cord to the Olympus recorder, then into any open USB port on your PC. The second method can be used if you have a card reader attached to your PC and are using a digital voice recorder with removable media, if so, insert the xD Picture card into the correct slot. Your

next step to click on the Olympus DSS Player  tab. This will automatically launch the Olympus DSS Player Software as illustrated below. You will also see the following window:




Note: As a reminder, if you do not see the  icon, make sure you have downloaded the Olympus DSS Player 4.8.5 patch.

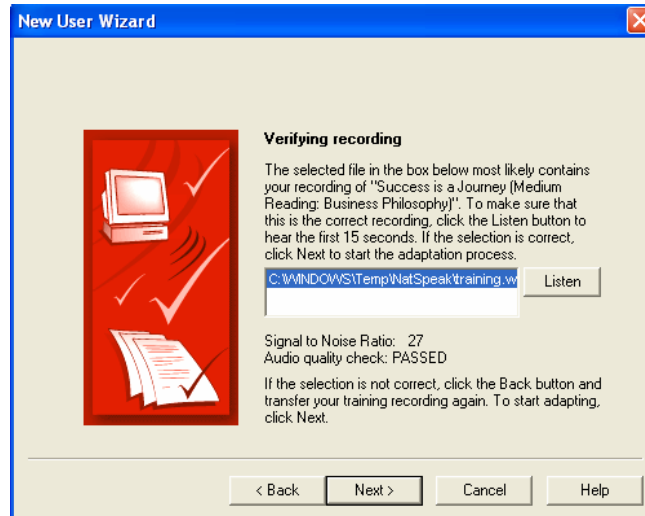


3. Select the recorded training on the right, then click  (the voice recognition icon).

Let Dragon NaturallySpeaking adapt to your user profile

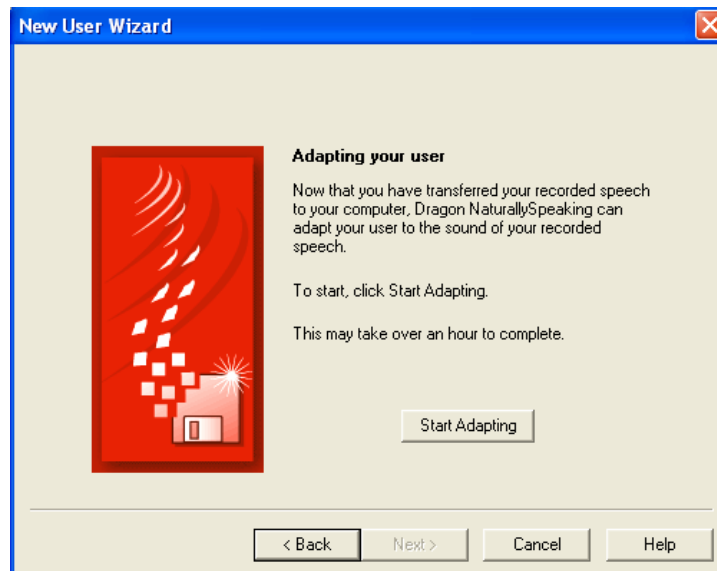
Good news... this is the third and final step to creating your mobile Olympus profile.

1. After complete the step above, you will be returned the Dragon New User dialog box. Click , the following will appear:



Note: This dialog box allows you to listen to your recording. It also displays a Signal to Noise Ratio and whether your audio quality check passed. A Signal to Noise Ratio above 15 is acceptable

2. Click , the window will open.



That adapting will take approximately 15-20 minutes.

Congratulations, you have successfully completed your portable profile with Dragon NaturallySpeaking v9.

